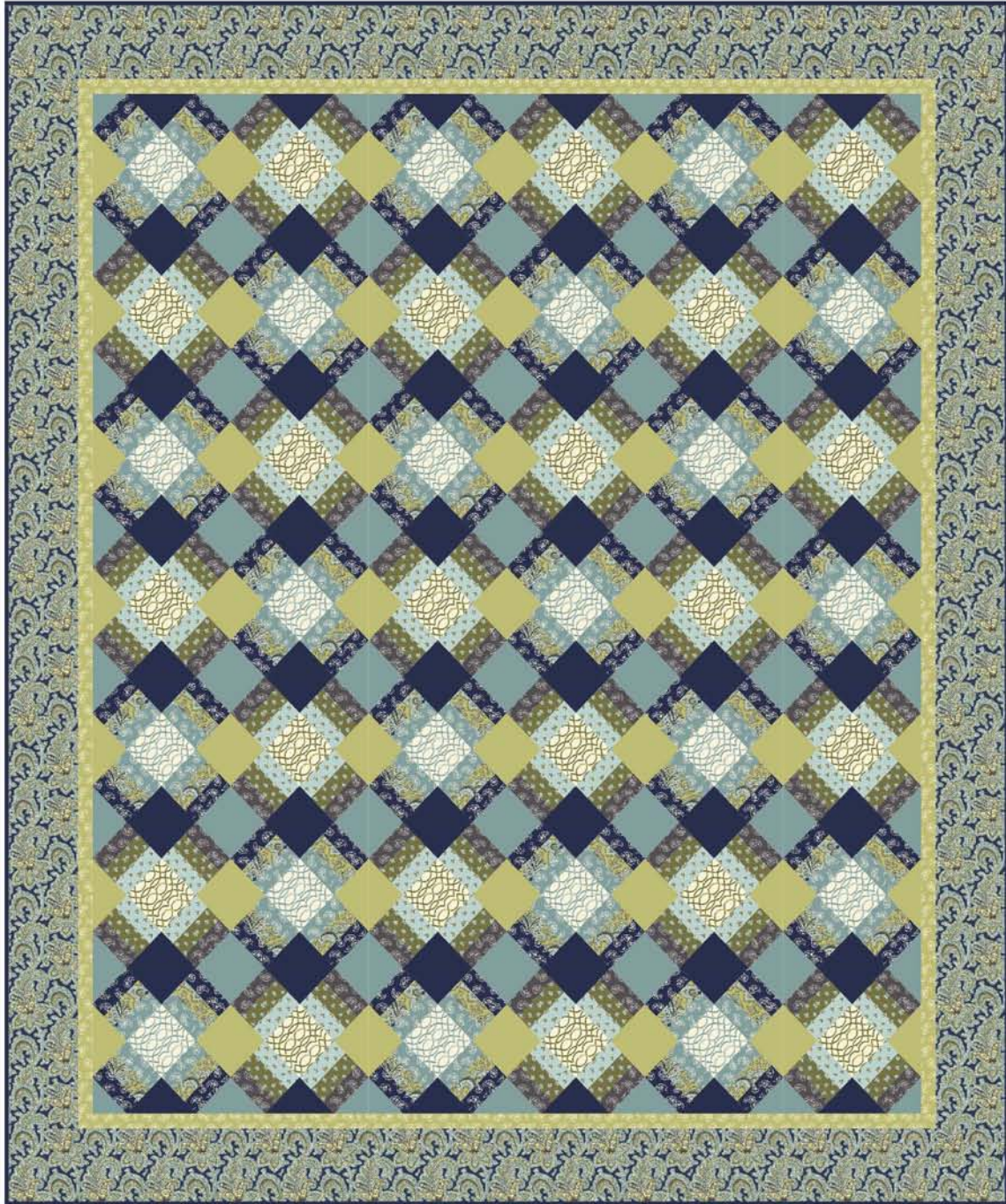


Woven Together

Designed by Char Hopeman of The Cotton Cottage Press
Featuring the Ariana Collection from Williamsburg
Size: 88 x 100"



Check www.windhamfabrics.com Free Project section to see if there are any pattern updates before you start your quilt project

WINDHAM FABRICS

812 Jersey Ave ~ Jersey City, NJ 07310 ~ 201.659.0444 ~ FAX: 201.659.9719
www.windhamfabrics.com email: retail@windhamfabrics.com

Woven Together

page 2



40437-1



40437-2



40438-3



40438-4



40439-1



40439-2



40439-4



40439-6



40440-3



40440-4



35362N-1



35362N-2



35362N-4

Fabric Requirements

- $\frac{3}{4}$ yd. Sku #40437-1 Celery
 - 2 yd. Sku #40437-2 Navy(includes outer border)
 - $\frac{3}{4}$ yd. Sku #40438-3 Olive
 - $\frac{3}{4}$ yd. Sku #40438-4 Aqua
 - $\frac{1}{2}$ yd. Sku #40439-1 Celery(includes inner border)
 - $\frac{3}{4}$ yd. Sku #40439-2 Navy
 - $\frac{3}{4}$ yd. Sku #40439-4 Aqua
 - $\frac{3}{4}$ yd. Sku #40439-6 Grey
 - $\frac{1}{2}$ yd. Sku #40440-3 Olive
 - $\frac{1}{2}$ yd. Sku #40440-4 Aqua
 - $1\frac{1}{2}$ yd. Sku #35362N-1 Celery
 - $1\frac{3}{4}$ yd. Sku #35362N-2 Navy(includes binding)
 - 1 yd. sku #35362N-4 Aqua
 - 8 yd. 40440-2 Navy(backing)
- Batting

Woven Together

page 3

CUTTING INSTRUCTIONS

Sku #40437-1 Celery

Cut 11 – 1⁷/₈"w strips.

Sku #40437-2 Navy

Cut 9 – 6"w strips(outer border).

Sku #40438-3 Olive

Cut 11 – 1⁷/₈"w strips.

Sku #40438-4 Aqua

Cut 11 – 1⁷/₈"w strips.

Sku #40439-1 Celery

Cut 8 – 2"w strips(inner border).

Sku #40439-2 Navy

Cut 11 – 1⁷/₈"w strips.

Sku #40439-4 Aqua

Cut 11 – 1⁷/₈"w strips.

Sku #40439-6 Grey

Cut 11 – 1⁷/₈"w strips.

Sku #40440-3 Olive

Cut 2 – 4³/₄"w strips. Cut these into 11 – 4³/₄" squares.

Sku #40440-4 Aqua

Cut 2 – 4³/₄"w strips. Cut these into 11 – 4³/₄" squares.

Sku #35362N-1 Celery

Cut 5 – 7¹/₄"w strips. Cut these into 21 – 7¹/₄" squares. Cut the squares into 84 1/4-square triangles.

Sku #35362N-2 Navy

Cut 5 – 7¹/₄"w strips. Cut these into 21 – 7¹/₄" squares. Cut the squares into 84 1/4-square triangles.

Cut 9 – 2¹/₄"w strips(binding).

Sku #35362N-4 Aqua

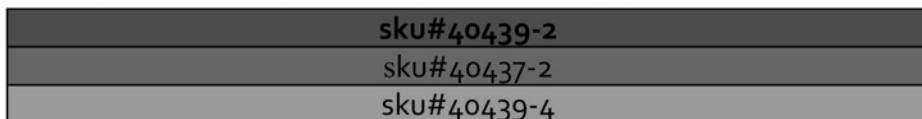
Cut 9 – 3⁷/₈" w strips. Cut these into 84 – 3⁷/₈" squares. Cut these into 168 1/2-square triangles.

PIECING INSTRUCTIONS

There are two different colored variations of the block.

Color variation A

Make 11 of the following strip-sets using the 1⁷/₈"w strips from Sku #'s 40437-1, 40439-2 and 40439-4. Press the seams to one side. Cut these strip-sets into 84 – 4³/₄" squares.

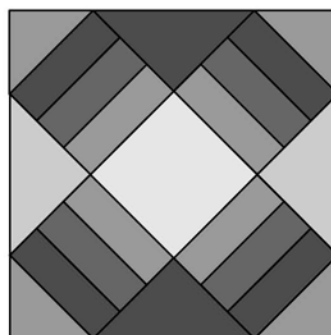
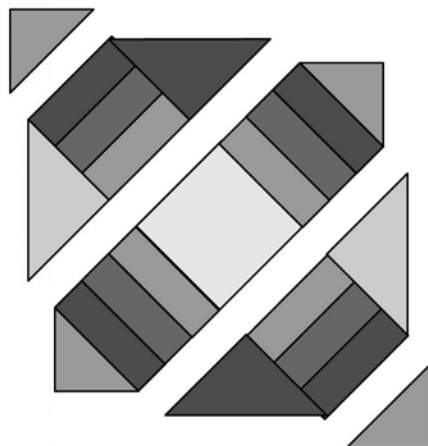


Woven Together

page 4

Sewing instructions cont.

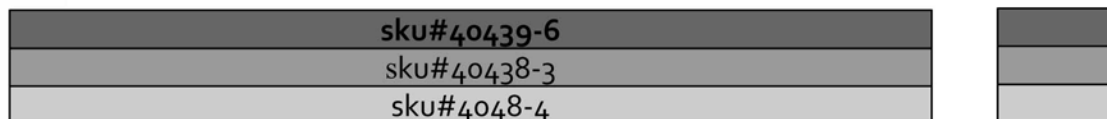
Using 42 of the Sku #35362N-1 $\frac{1}{4}$ -square triangles, 42 of the Sku #35362N-2 $\frac{1}{4}$ -square triangles, 84 of the 35362N-4 half-square triangles, the 21 – $4\frac{3}{4}$ " Sku #40440-3 and the $4\frac{3}{4}$ " squares cut from the strip-sets assemble the A blocks in diagonal rows as follows. Press the seams toward the triangles and the center square in each section. Press the diagonal seams between the sections toward the center section and the half-square triangles.



Make 21 - A blocks

Color variation B

Make 21 of the following strip-sets using the $1\frac{7}{8}$ "w strips from Sku #'s 40439-6, 40438-3 and 40438-4. Press the seams to one side. Cut these strip-sets into 84 – $4\frac{3}{4}$ " squares.



2

Sew the blocks into 4 rows of 4 – A blocks and 4 – B blocks starting with and A block. Press the seams to the right. These are the ODD rows.

Sew the remaining blocks into 4 rows of 4 – B – blocks and 4 A blocks starting with a B block. Press the seams in these rows to the left. These are the EVEN rows.

Sew the rows together alternating ODD and EVEN rows. Press the seams all in the same direction.

BORDERS

Inner Border

Sew the 2"w Sku #40439-1 inner border strips together into one long strip. Measure the length of the quilt top. Cut 2 border strips this length. Sew them to the sides of the quilt top. Press the seams toward the border strips.

Measure the width of the quilt top. Cut two border strips this length. Sew them to the top and bottom of the quilt top. Press as before.

Woven Together

page 5

Sewing instructions cont.

Outer Border

Sew the 6" w Sku #40437-2 outer border strips together into one long strip. Measure the length of the quilt top. Cut 2 border strips this length. Sew them to your quilt top as you did for the inner border. Press as before.

Measure the width of the quilt top. Cut 2 border strips this length. Sew and press as before.

FINISHING

Layer the backing, batting and quilt top. Baste and quilt as desired.

Bind using the binding 9 strips cut from Sku #35362N-2.

ENJOY!!

Be sure to check the pattern page on our website or updates before beginning your project!

Be sure to visit www.windhamfabrics.com to see the complete collection
and to download this and other Free Projects

WINDHAM *W* FABRICS